

PRODUCT DESCRIPTION

All FTE series is based on polyimide (PI) substrate (0.125 mm of thickness). The electrode width on all kind of FTE series is 12.6 mm, and other dimension data of FTE series are shown in Figure 1. The geometric area of working electrode, counter electrode and reference on FTE series is 0.79 mm², 3.05 mm² and 0.20 mm² respectively.

RECOMMEND USING GUIDE

All kind of FTE series can be used directly without clean process before use. However, you need note that some factors maybe pollute the electrode if it is got out from the vacuum package for a long time, and it is kept without other process like as dust removal, sunlight avoid, and etc.

When a thin electrode such as FTE series is used, the **Connector Gasket (CG1)** is suggested to be used. Before the FTE connect to connector, CG1 should be inserted in connector slot to tight the electrode. Use guide of the CG1 is presented as the **Figure 2**. CG1 is also available for other customized electrode based on base substrate with 0.125 mm thickness, and its corresponded connector on device in **Table 1**.

Noted All kind of FTE series product should have 2 pcs CG1 within a package. If it is not found in package, please contact the agent or manufacturer.

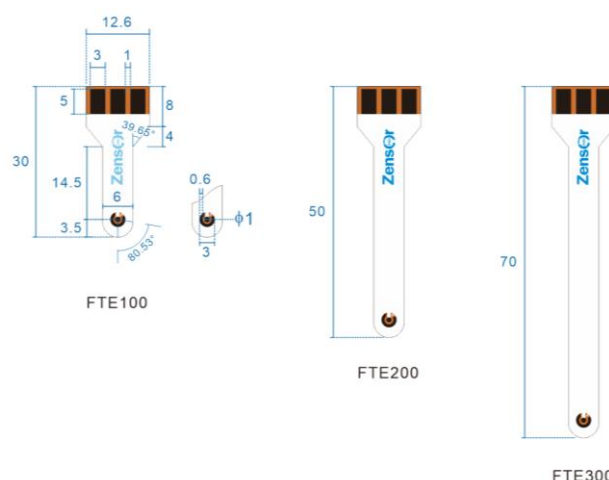


Figure 1 Dimensions of FTE100, FTE200 and FTE300.

Substrate Material

DuPont™ Kapton® FPC polyimide film is used as base substrate of FTE series product. The certification of Kapton® FPC meets IPC 4202B requirements.

Clean-up

The product may be polluted during continuous use. Do not use Acetone, Methyl Ethyl Ketone, MIBK, butylglycol acetate or similar solvents if the product needs to be cleaned.

Physical stability

The product can be remained well physical properties under 20 to 100 °C.

Storage

Store product in the unopened package in a dry and avoid sunlight location.

Table 1 Correspond device to CG1

Item	Device
1	ECAS100
2	ECWP100single
3	ECWP100plus
4	EIWP100
5	EIWP110
6	ECC100

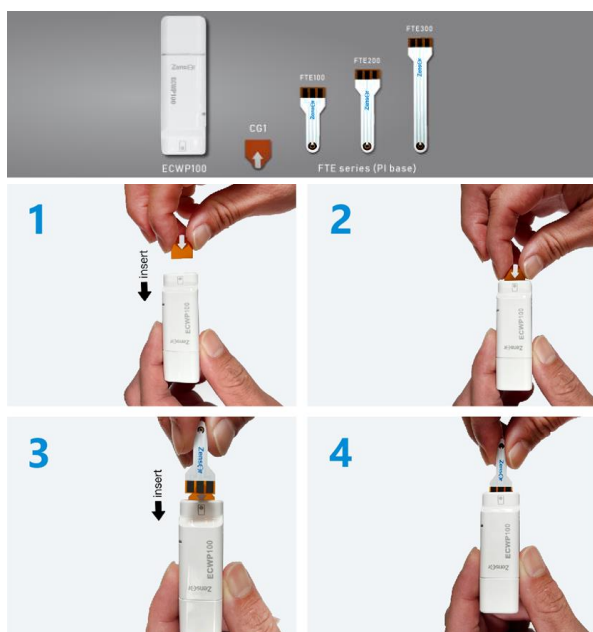


Figure 2 Schematic images of CG1 using process